

PACKING LIST

LINENS

Check your building's bed size before buying bedding!

Full-size bed: Parkview, University Towers, Tamiami
Twin XL bed: Panther, Everglades, Lakeview North & South
Twin bed: University Apartments
Comforter / Blankets
Mattress Pad
Pillows
Towels (Bath, Hand & Washcloths)

PERSONAL ITEMS

Health Insurance Information
Government-Issued ID
Toiletries: Soap, Shampoo,
Conditioner, Toothbrush,
Toothpaste, Shaving Items,
Styling Products
Toilet Paper
Tissues
Decorations

LAUNDRY & CLEANING SUPPLIES

Laundry Detergent
Stain Remover / Fabric
Softener
Laundry Basket
Hangers
Iron & Ironing Board or
Steamer
Disinfectant Spray / Wipes
Hand Sanitizer
Antibacterial Soap
Spray Cleaner
Paper Towels
Small Trash Can
Broom or Small Vacuum
Toilet Bowl Cleaner
Glass Cleaner

DO NOT BRING THE FOLLOWING ITEMS

Air conditioners
Candles (even if unlit)
Space heaters
Pets (only fish in tanks under 10 gallons are allowed)
Firearms or weapons of any kind
Halogen lamps
Scooters (electric or manual, unless approved for accessibility)
Valuable or irreplaceable items
Small kitchen appliances with exposed heating elements, such as hot plates, immersion heaters, or indoor/outdoor grills

KITCHEN ESSENTIALS

All units come with a full-size refrigerator

Dishes
Utensils
Plastic Containers
Pots & Pans
Dish Towels
Dish Soap & Sponges
Food

EMERGENCY / HURRICANE KIT

Flashlight
Batteries
Water
Canned Food
First Aid Kit / Medicine
Power Bank

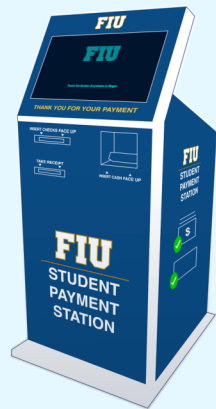
ELECTRONICS & EXTRAS

Laptop
Surge Protector / Power Strip
Television
Microwave
Lamps
Gaming System

HOUSING FINANCIAL SERVICES

ONLINE PAYMENTS

Log in to my.fiu.edu
Pay by e-check (free) or by credit/debit card (fees apply)



SELF-SERVICE STATIONS (AVAILABLE 24/7)

- Locations:
- SASC | Student Academic Success Center
 - EH | Everglades Hall 124

Accepted Payment Methods: Cash, Money Orders, Cashier's Checks, and Traveler's Checks

PAYMENT PLANS

Step 1 Enroll online via my.fiu.edu

Step 2 Go to: Financial Account → Enroll in Payment Plan

Step 3 Review your plan and follow the instructions

For rental rates and payment plan details, visit housing.fiu.edu

FINANCIAL AID

You can use the following to cover housing costs:
Grants
Scholarships
Loans

THIRD-PARTY ASSISTANCE

For help with these programs, contact Housing Finance:

- Athletics
- Veterans Affairs
- Vocational Rehab
- Disability Resource Center
- Fostering Panther Pride
- Florida Prepaid Dormitory 529 Plan

IMPORTANT CONTACTS

MAIN HOUSING OFFICE

For questions about room assignments, the housing application process, deadlines, or general housing inquiries.

University Towers 121
305-348-4190
housing@fiu.edu

RESIDENTIAL EXPERIENCE

The Residential Experience team supports residents with community concerns, roommate issues, and questions about living on campus. For after-hours support or urgent residential concerns, contact your RA or the RA on duty.

Panther Hall 126
305-348-3661
reslife@fiu.edu

FACILITIES

Submit a maintenance request at housing.fiu.edu/resident-resources/maintenance for issues like AC not working, broken furniture, leaks, or clogged drains.

Lakeview South 140
305-348-1162

FINANCE

Contact the Housing Finance team for questions about payments, payment plans, financial aid disbursement, or third-party billing like Florida Prepaid or Veterans benefits.

Everglades Hall 124
305-348-0324

HOUSING PACKAGE CENTER

Handles all mail and packages for on-campus residents. Accepts deliveries from USPS, UPS, FedEx, Amazon, DHL, and LaserShip.

Lakeview South 133
305-348-8016

Use your full name and Lakeview South's address when ordering. You'll get a text and email when your item is ready for pickup.

Delivery Address Example:
First Name Last Name
11040 SW 14th St
Miami, FL 33174

STAY IN THE KNOW!

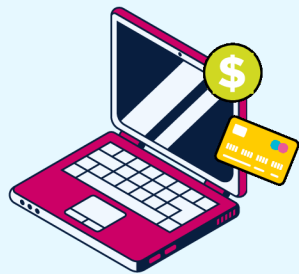
Follow @livefiu for move-in tips, giveaways, events, and everything you need to thrive on campus. Don't miss out!



ARE YOU STAYING CONNECTED?



Use this link to find out how to connect your electronics to the FIU network.



WELCOME HOME PANTHER





We're happy you're here!

Welcome to your new home in FIU Housing & Residential Experience as an FIU Panther! We are so excited to have you join the on-campus community.

In this guide, you will find information that will help you have a successful move-in to your new home on campus including move-in instructions, checklists, a map of campus, and an unloading pass. Be sure to bring this with you for a fun, stress-free move-in experience.

We cannot wait to meet you and look forward to welcoming you on your move-in day!

Sincerely,
Andrew Naylor, MS, CSAEd-HRL
Senior Director
Housing & Residential Experience

EARLY FALL 2026 MOVE-IN MAP

Please see your custom insert card or housing portal for more specific details

- Complete precheck-in at my.fiu.edu
- Follow map to check-in lot and then to rapid unload zone
- Unload belongings in rapid unload zone
- Move your car to designated parking lot
- Pick-up key and packet at front desk
- Unpack and return moving cart
- Meet your RA, DA, and REC



THINGS TO KEEP IN MIND

- 20-MINUTE MOVE-IN APPOINTMENT**
This can be found in the insert card of this guide as well as on your housing portal at my.fiu.edu.
- ARRIVING OUTSIDE YOUR TIME SLOT**
You may be directed to wait in a holding lot until space is available.
- DOWNLOAD THE FIU MOBILE APP**
To locate the parking lot available for your move-in, which you can find on your rapid unload pass.
- AVOID BRINGING OVERSIZED FURNITURE OR VEHICLES**
Large items may be denied entry, and RVs or moving trucks must park in the Cuban Memorial Lot.
- PACK LIGHT!**
Bring only what fits in two move-in carts (cart size: 48" x 28.5" x 59") and if you have two cars, let staff know they're together.

DAY OF TIMELINE

IMPORTANT DATES

EARLY FALL 2026

JUN. 19 - 20	Early Fall Move-In
JUN. 22	Early Fall Classes Begin
JUN. 28	Early Fall Add/Drop Deadline
JUL. 1	Rent Payment Due for Early Fall
AUG. 24	Fall Classes Begin
AUG. 27	Fall Add/Drop Deadline
SEP. 2	Fall Rent Payment Due
DEC. 7 - 12	Final Exams

Fall Move-Out*
*For students studying abroad, transfers students, and students graduating.

Continuing Residents
Halls open for all continuing residents from December 12 - January 2.

24 HOURS AFTER YOUR LAST FINAL
or Saturday, December 12 by 12pm - whichever comes first

SPRING 2027

JAN. 8	Spring Move-In
JAN. 11	Spring Classes Begin
JAN. 14	Spring Add/Drop Deadline
JAN. 20	Spring Rent Payment Due Date
MAR. 1-7	Spring Break (Office Open)
APR. 26 - MAY 1	Final Exams
MAY 1	Move-Out

24 HOURS AFTER YOUR LAST FINAL
or Saturday, May 1 by 12pm - whichever comes first