

## PACKING LIST

### LINENS

Check your building's bed size before buying bedding!

**Full-size bed:** Parkview, University Towers, Tamiami  
**Twin XL bed:** Panther, Everglades, Lakeview North & South  
**Twin bed:** University Apartments  
Comforter / Blankets  
Mattress Pad  
Pillows  
Towels (Bath, Hand & Washcloths)

### PERSONAL ITEMS

Health Insurance Information  
Government-Issued ID  
Toiletries: Soap, Shampoo,  
Conditioner, Toothbrush,  
Toothpaste, Shaving Items,  
Styling Products  
Toilet Paper  
Tissues  
Decorations

### LAUNDRY & CLEANING SUPPLIES

Laundry Detergent  
Stain Remover / Fabric  
Softener  
Laundry Basket  
Hangers  
Iron & Ironing Board or  
Steamer  
Disinfectant Spray / Wipes  
Hand Sanitizer  
Antibacterial Soap  
Spray Cleaner  
Paper Towels  
Small Trash Can  
Broom or Small Vacuum  
Toilet Bowl Cleaner  
Glass Cleaner

### DO NOT BRING THE FOLLOWING ITEMS

Air conditioners  
Candles (even if unlit)  
Space heaters  
Pets (only fish in tanks under 10 gallons are allowed)  
Firearms or weapons of any kind  
Halogen lamps  
Scooters (electric or manual, unless approved for accessibility)  
Valuable or irreplaceable items  
Small kitchen appliances with exposed heating elements, such as hot plates, immersion heaters, or indoor/outdoor grills

### KITCHEN ESSENTIALS

All units come with a full-size refrigerator

Dishes  
Utensils  
Plastic Containers  
Pots & Pans  
Dish Towels  
Dish Soap & Sponges  
Food

### EMERGENCY / HURRICANE KIT

Flashlight  
Batteries  
Water  
Canned Food  
First Aid Kit / Medicine  
Power Bank

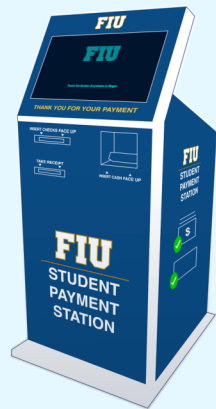
### ELECTRONICS & EXTRAS

Laptop  
Surge Protector / Power Strip  
Television  
Microwave  
Lamps  
Gaming System

## HOUSING FINANCIAL SERVICES

### ONLINE PAYMENTS

Log in to [my.fiu.edu](https://my.fiu.edu)  
Pay by e-check (free) or by credit/debit card (fees apply)



### SELF-SERVICE STATIONS (AVAILABLE 24/7)

- Locations:
- SASC | Student Academic Success Center
  - EH | Everglades Hall 124

Accepted Payment Methods: Cash, Money Orders, Cashier's Checks, and Traveler's Checks

### PAYMENT PLANS

**Step 1** Enroll online via [my.fiu.edu](https://my.fiu.edu)

**Step 2** Go to: Financial Account → Enroll in Payment Plan

**Step 3** Review your plan and follow the instructions

For rental rates and payment plan details, visit [housing.fiu.edu](https://housing.fiu.edu)

### FINANCIAL AID

You can use the following to cover housing costs:  
Grants  
Scholarships  
Loans

### THIRD-PARTY ASSISTANCE

For help with these programs, contact Housing Finance:

- Athletics
- Veterans Affairs
- Vocational Rehab
- Disability Resource Center
- Fostering Panther Pride
- Florida Prepaid Dormitory 529 Plan

## IMPORTANT CONTACTS

### MAIN HOUSING OFFICE

For questions about room assignments, the housing application process, deadlines, or general housing inquiries.

University Towers 121  
305-348-4190  
[housing@fiu.edu](mailto:housing@fiu.edu)

### RESIDENTIAL EXPERIENCE

The Residential Experience team supports residents with community concerns, roommate issues, and questions about living on campus. For after-hours support or urgent residential concerns, contact your RA or the RA on duty.

Panther Hall 126  
305-348-3661  
[reslife@fiu.edu](mailto:reslife@fiu.edu)

### FACILITIES

Submit a maintenance request at [housing.fiu.edu/resident-resources/maintenance](https://housing.fiu.edu/resident-resources/maintenance) for issues like AC not working, broken furniture, leaks, or clogged drains.

Lakeview South 140  
305-348-1162

### FINANCE

Contact the Housing Finance team for questions about payments, payment plans, financial aid disbursement, or third-party billing like Florida Prepaid or Veterans benefits.

Everglades Hall 124  
305-348-0324

### HOUSING PACKAGE CENTER

Handles all mail and packages for on-campus residents. Accepts deliveries from USPS, UPS, FedEx, Amazon, DHL, and LaserShip.

Lakeview South 133  
305-348-8016

Use your full name and Lakeview South's address when ordering. You'll get a text and email when your item is ready for pickup.

Delivery Address Example:  
First Name Last Name  
11040 SW 14th St  
Miami, FL 33174

### STAY IN THE KNOW!

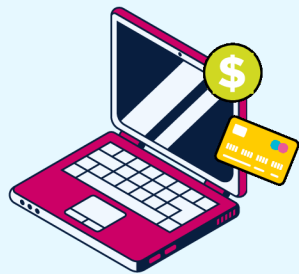
Follow @livefiu for move-in tips, giveaways, events, and everything you need to thrive on campus. Don't miss out!



### ARE YOU STAYING CONNECTED?



Use this link to find out how to connect your electronics to the FIU network.



# WELCOME HOME PANTHER





## We're happy you're here!

Welcome to your new home in FIU Housing & Residential Experience as an FIU Panther! We are so excited to have you join the on-campus community.

In this guide, you will find information that will help you have a successful move-in to your new home on campus including move-in instructions, checklists, a map of campus, and an unloading pass. Be sure to bring this with you for a fun, stress-free move-in experience.

We cannot wait to meet you and look forward to welcoming you on your move-in day!

Sincerely,  
 Andrew Naylor, MS, CSAEd-HRL  
 Senior Director  
 Housing & Residential Experience

## EARLY FALL 2026 MOVE-IN MAP

Please see your custom insert card or housing portal for more specific details

- Complete precheck-in at my.fiu.edu
- Follow map to check-in lot and then to rapid unload zone
- Unload belongings in rapid unload zone
- After unloading, park in the designated lot
- Pick-up key and packet at front desk
- Unpack and return moving cart
- Meet your RA, DA, and REC



### THINGS TO KEEP IN MIND

**20-MINUTE MOVE-IN APPOINTMENT**  
 This can be found in the insert card of this guide as well as on your housing portal at my.fiu.edu.

**ARRIVING OUTSIDE YOUR TIME SLOT**  
 You may be directed to wait in a holding lot until space is available.

**DOWNLOAD THE FIU MOBILE APP**  
 To locate the parking lot available for your move-in. Parking details will be shared at check-in.

**AVOID BRINGING OVERSIZED FURNITURE OR VEHICLES**  
 Large items may not be allowed. RVs and moving trucks must park in the designated lot. Parking details will be shared at check-in.

**PACK LIGHT!**  
 Bring only what fits in two move-in carts (cart size: 48" x 28.5" x 59") and if you have two cars, let staff know they're together.

### DAY OF TIMELINE

### IMPORTANT DATES

## EARLY FALL 2026

JUN. 19 - 20	Early Fall Move-In
JUN. 22	Early Fall Classes Begin
JUN. 28	Early Fall Add/Drop Deadline
JUL. 1	Rent Payment Due for Early Fall
AUG. 24	Fall Classes Begin
AUG. 27	Fall Add/Drop Deadline
SEP. 2	Fall Rent Payment Due
DEC. 7 - 12	Final Exams

**Fall Move-Out\***  
 \*For students studying abroad, transfers students, and students graduating.

**Continuing Residents**  
 Halls open for all continuing residents from December 12 - January 2.

**24 HOURS AFTER YOUR LAST FINAL**  
 or Saturday, December 12 by 12pm - whichever comes first

## SPRING 2027

JAN. 8	Spring Move-In
JAN. 11	Spring Classes Begin
JAN. 14	Spring Add/Drop Deadline
JAN. 20	Spring Rent Payment Due Date
MAR. 1 - 7	Spring Break (Office Open)
APR. 26 - MAY 1	Final Exams
MAY 1	Move-Out

**24 HOURS AFTER YOUR LAST FINAL**  
 or Saturday, May 1 by 12pm - whichever comes first